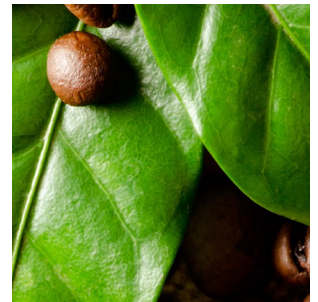
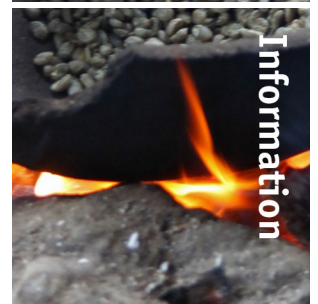


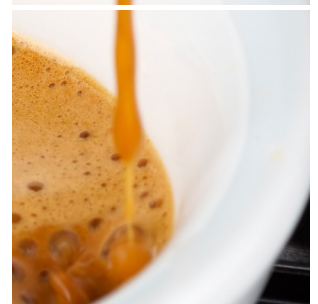
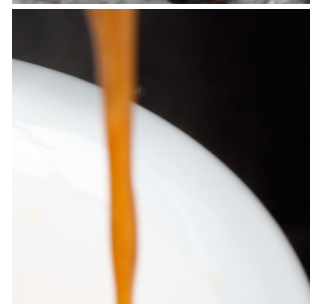
Zia 6.023 [a1] freshbrew paperless



Product



Information



Key features

- CoEx® brewer & ground coffee
- 10.4" full color touch screen
- Illuminated outlet area
- Glass detecting cup sensor
- Outlet indication
- Separate hot water outlet
- Jug facility

Options

- Front branding
- On-screen communication options
- Connect.Me® [online monitoring]
- Table base for 2 Liter jugs
- Base cabinet with condiment trays
- Water cooler in base cabinet
- Waste guide

Zia 6.023 [a1] freshbrew paperless



Dimensions

	mm
Machine	h 796
	w 365
	d 420
Base Cabinet	h 850
	w 365
	d 420
Weight	45 kg

Specifications

- MoVeC-ICEq® & USB upload
- 10,4" full color touch screen
- User Interface : DJD/Scope
- Menu structure for selections
- Direct start optional
- Jug facility
- Multiple languages possible
- Glass detecting Cup-sensor
- Strength selections menus
- Connection for payment systems [MDB]
- Boiler : 2x 0.4L

Connections

- 220-240 Volt AC
- 50/60 Hz
- 2900 Watt
- 10-16Amp
- ¾" BSP [15 mm] mains
- waterfilter & waterlock recommended
- LAN or Wifi

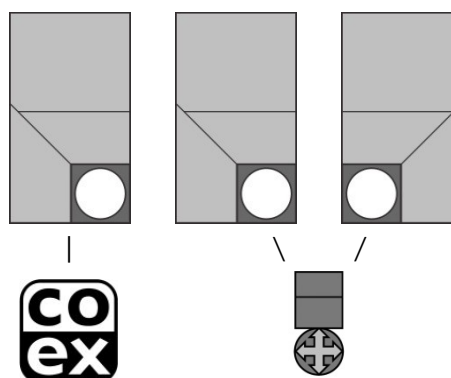
Selections

Freshbrew coffee	Hot Chocolate
Mocca	Chocomilk
Cappuccino	Coffeeshoc
Cafe au Lait	Wiener Melange

Customized recipes** Hot water
 Chilled [sparkling] water ** Jug Selections

** optional, ask for details & conditions

Canisters



Capacities

	#	Size	Gram	Cups
Ground Coffee	1	120	1200	160
Milk topping	2	120	1600	265
Chocolate	3	120	2450	120

Waste bucket ≥ 180

Number of cups may vary depending on settings

